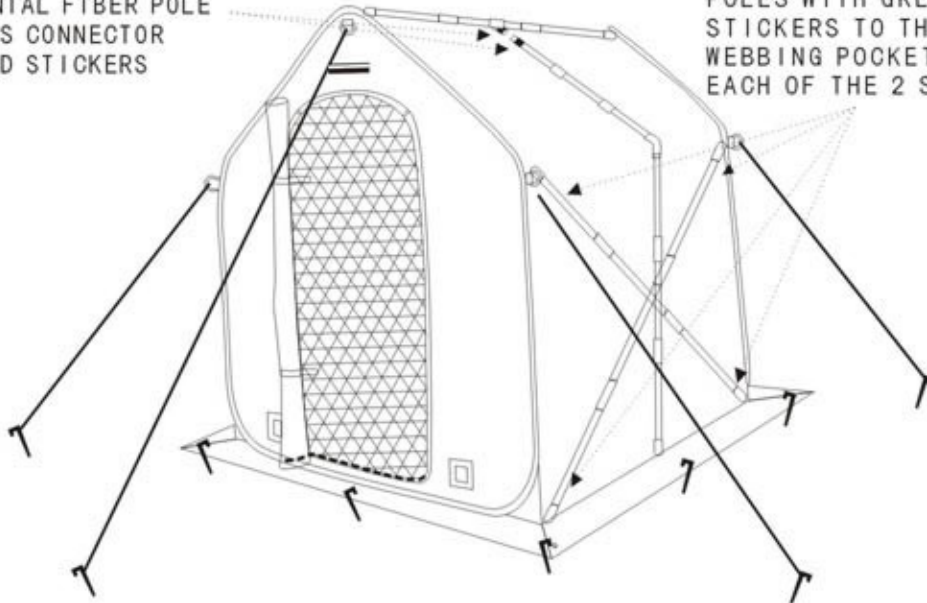


NEW STRONGER SPRINGHOUSE : FIBER POLE AND TIE DOWN DIAGRAM

TO INSERT THE FIBER POLES WITH RED STICKER TO THE HORIZONTAL FIBER POLE THAT HAS CONNECTOR WITH RED STICKERS

TO INSERT THE FIBER POLES WITH GREEN STICKERS TO THE GREEN WEBBING POCKETS ON EACH OF THE 2 SIDES



SpringHouse set-up

Step 1. Unpack FlowerHouse and accessories, allowing the spring steel bands to pop open

Step 2. Take fiber poles out of pack and assemble completely. Ensure poles are fully seated into each other. You will have four equal length poles one shorter pole with an "X" bracket and two L shaped poles.

Step 3. Install top roof pole (the single shorter pole with the "X" in the center) by inserting the pole into the pockets sewn inside the Flower House at the roof peaks.

Step 4. Install the sidewall support poles by inserting the poles into the pockets sewn inside the FlowerHouse in each sidewall corner. Insert one pole at a time, diagonally to form an X in each wall. Secure poles with ties sewn into wall.

Step 5. Install the L shaped poles into the center "X" bracket in the center of the roof. Insert the bottom end of the pole into the pocket at the center of the side wall at the floor, leaving the poles off center till both poles are both inserted. Once both poles are installed, push poles to the center.

(Hint: Fiber pole pockets may be obscured behind the spring steel bands. Pull the band away from the wall and insert fiber poles into pockets)

Step 6. Stake Greenhouse in location and install High wind tie downs



Step 1: Remove your SpringHouse™ from the pack.



Step 2: Allow your SpringHouse™ to spring open.



Step 3: Unfold your SpringHouse™ into 2 panels.



Step 4: Unzip the easiest accessible doorway and screen. Grab the center steel band and lift up to separate the two sides of your SpringHouse™.



Step 5: Stand on the bottom corner of the skirting and lift your SpringHouse™ over your head. Push out on the center steel band (Shown in fig. D) and left up to separate the two sides of your SpringHouse™.



Step 6: Stand pm the bottom corner of the skirting and lift your SpringHouse™ over your head. Push out on the center steel band (Shown in fig. D) and left up to separate the two sides of your SpringHouse™.



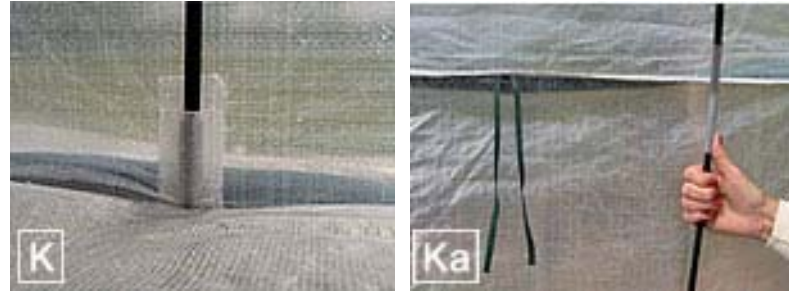
Step 7: Secure your SpringHouse™ using the supplied stakes. Insert the stakes into the stake holes of the skirt at 45° angles.



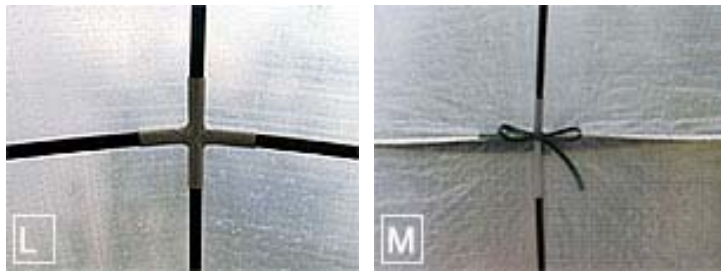
Step 8: You must secure your SpringHouse™ using the High-wind tie-downs. Insert one end of the rope through the D-ring in the top corner, then through the anchor. Knot the rope around a stake and insert it in the ground at a 45° angle. Keep as much tension on the rope as possible. Repeat this step with all corner locations, as well as the D-rings on the peak ends and top center of the side walls.



Step 9: Begin with the X-shaped fiber pole. (See "I"). Insert the capped ends into the pockets above the doorways. Then completely assemble the fiber pole. (See "J").



Step 10: Beginning with **one** of the L-shaped fiber poles, insert the capped end into the pocket in the center near the floor. (See "K"). Insert the uncapped end into the X-shaped piece. "See "L)". While assembling the L-shaped pole, keep it to one side. This will relieve some tension and allow for easier assembly. (See "Ka").



Step 11: Repeat Step 10 with the second L-shaped fiber pole. When the poles are completely assembled, move them to the center of the wall, and tie them to hold them in one place. See photo M.



Step 12: The doorways of your SpringHouseTM can be secured open for ventilation. First unzip the top portion of the outer door. Roll it down and secure it with the straps.

Step 13: The screens can also be secured open. Unzip both the doorway and screen. Roll them together long ways. Secure with the straps.



Step 1: To take down your SpringHouse™ begin by removing all high-wind tie-downs and stakes. It may be easier for you to use the head of one stake to remove another. Shown above.



Step 2: Untie the straps holding the L-shaped fiber poles in place. Move them to one side. This will relieve some tension.



Step 3: Step on the skirting just under the pockets to remove the L-shaped fiber poles.



Step 4: Remove the L-shaped fiber poles from the X-shaped fiber pole at the ceiling. (Shown in "D") Then remove the L-shaped fiber poles from the ceiling. Step outside and zip the doors shut.



Step 5: Tip your SpringHouse™ over. NOTE: It will not lay flat. Push firmly on the center band to spring it back into place so your SpringHouse™ will fold inward.



Step 5: Fold your SpringHouse™ in half, from 2 panels to one. As shown in photos "7& 7a".



Step 6: Choose one of the top corners so the skirting does not get in the way. While folding in half, you will feel the tension of the spring steel. Move your left hand back to where your SpringHouse™ is bent.



Step 7: Fold the top corner under while you bring the left side up and over. While doing this, slide the entire SpringHouse™ toward you.



Step 8: Once the top corner is folded under, fold the left side down completely.



Step 9: Fold the right side down over the left side. It will then form 3 rings on top of each other.



Step 10: Hold your SpringHouse™ between your knees to put it in the pack. It will prevent your SpringHouse™ from springing open while you are putting it away. Slide the pack over your folded SpringHouse™.



Store the stakes and high-wind tie-downs in the pouches provided, place them in the pack. Now you can take your SpringHouse™ with you anywhere !

Parts List:

- SpringHouse™ (78" x 72" x 72")
- Pre-Assembled Fiber poles
- Ground Stakes
- High-Wind Tie-Downs
- Shade Cover
- Carry Pack